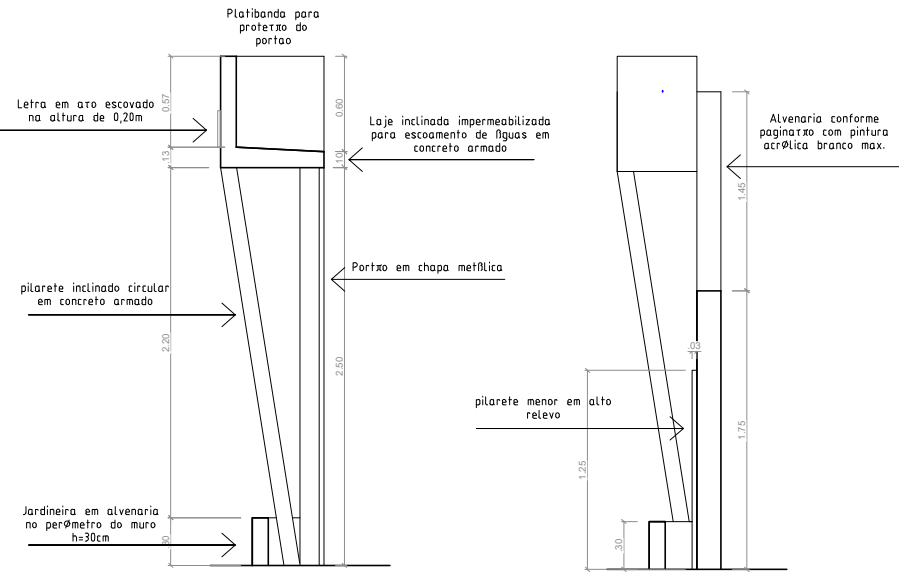
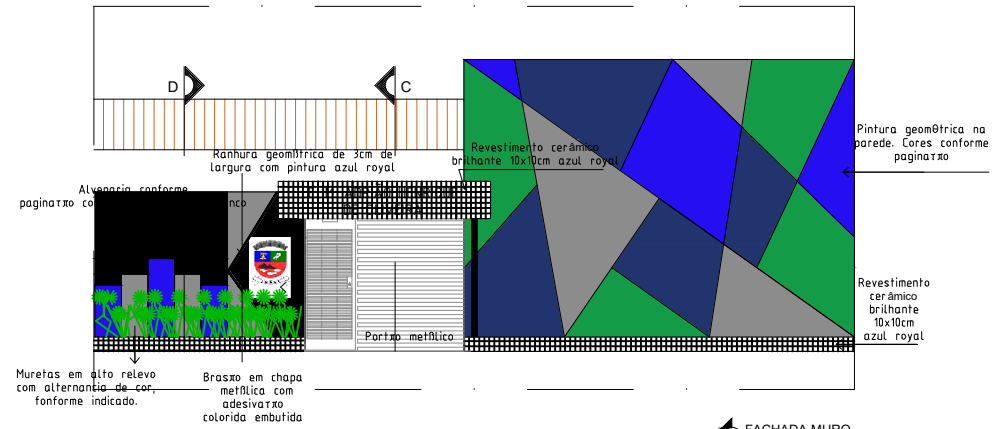


01 FACHADA-MURO
Esc: 1/50



02 CORTE C
Esc: 1/25

03 CORTE D
Esc: 1/25



04 FACHADA-MURO
Esc: 1/50

Prefeitura municipal de igaci		
Reforma e Ampliação das Escolas municipais		
Escola Municipal São vicente de Paula		
Localidade: Serra Verde		
Data: JAN/ 2020	Escala: Indicada	Prancha: 01/ 01
Levantamento:		